



Baltimore Data Day

Health & Education Panel
Al Passarella, Research Director
Neha Trivedi, Health Policy Director

July 25, 2014





ADVOCATES FOR CHILDREN & YOUTH

- Is an independent, state-wide, child advocacy organization seeking to create a better life for each of Maryland's children through policy, practice, and advocacy.
- We work across four issue areas: Education, child welfare, juvenile justice and health. In addition, all our work looks through a racial equity and economic sustainability lens.

Our health priorities include:

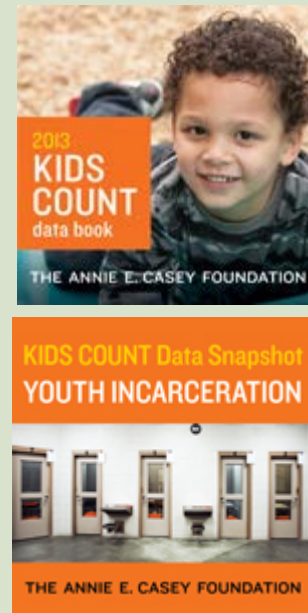
- Evaluating children and families' access to health coverage under the State's new eligibility and enrollment system.
- Monitoring network adequacy for primary and pediatric specialty services including pediatric dental care.
- Monitoring enrollment and access to health services for former foster youth who are now eligible for Medicaid to age 26.
- Identifying appropriate integrative care models, such as health homes, to improve the health status of vulnerable children and youth.
- Collaborating across silos to address social determinants of public health.

NATIONAL KIDS COUNT PROJECT

**KIDS COUNT
Data Center**
datacenter.kidscount.org



**KIDS COUNT *Data
Book*/Publications**



**Mobile Site/
Social Media**
mobile.kidscount.org



KIDS COUNT DATA CENTER INDICATORS



**Economic
Well-Being**



Education



Health



**Family and
Community**

Trends in Health



HEALTH

DOMAIN RANK

14

Low-birthweight babies

2012

8.8%

6,417 BABIES

IMPROVED

2005 9.1%

Children without health insurance

2012

4%

51,000 CHILDREN

IMPROVED

2008 5%

Child and teen deaths per 100,000

2010

24

342 DEATHS

IMPROVED

2005 30

Teens who abuse alcohol or drugs

2011-12

6%

26,000 TEENS

IMPROVED

2005-06 7%

KIDS COUNT data center

A PROJECT OF THE ANNIE E. CASEY FOUNDATION



DATA BY LOCATION

DATA BY TOPIC

PUBLICATIONS

UPDATES

Help

About

Contact

A project of the Annie E. Casey Foundation, KIDS COUNT is the premiere source for data on child and family well-being in the United States. Access hundreds of indicators, download data and create reports and graphics on the KIDS COUNT Data Center that support smart decisions about children and families.

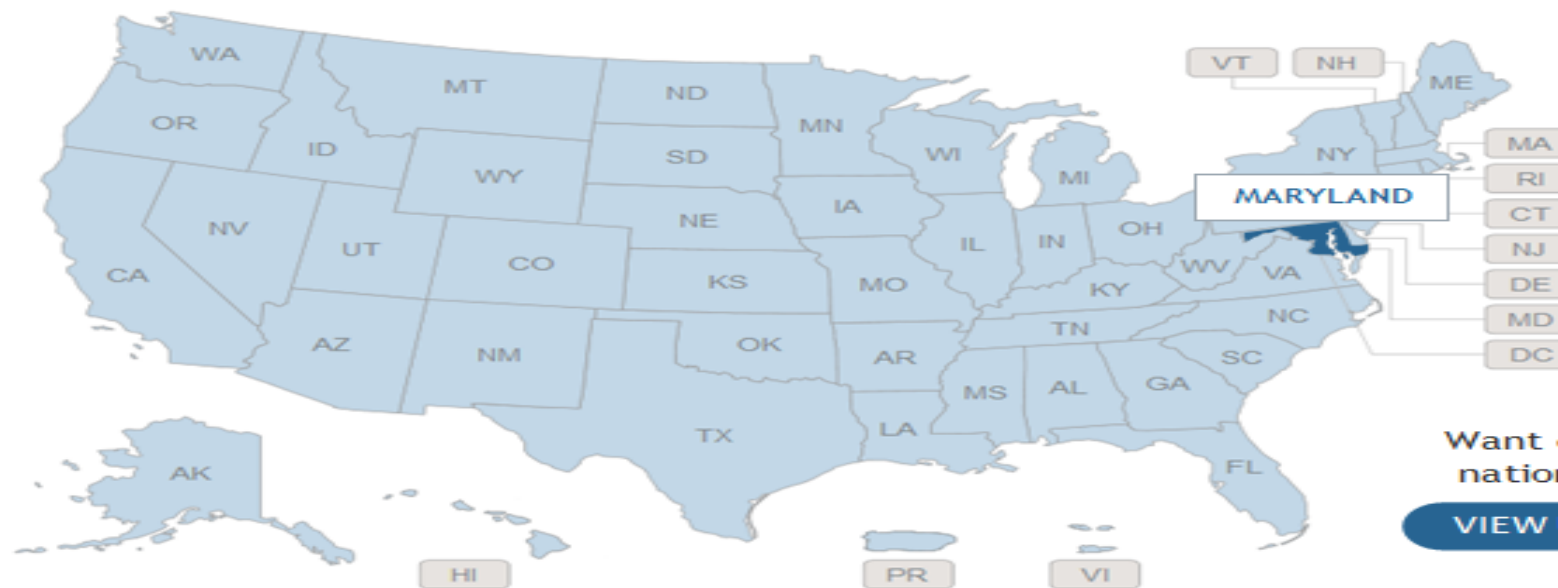
SEARCH



Enter any location, topic and/or keywords here

SEARCH DATA CENTER

CHOOSE A STATE

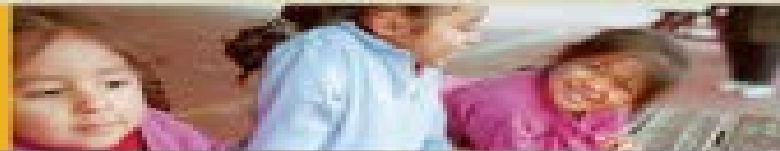


Want data on a national level?

VIEW U.S. DATA

KIDS COUNT data center

A PROJECT OF THE ANNIE E. CASEY FOUNDATION

[DATA BY LOCATION](#)[DATA BY TOPIC](#)[PUBLICATIONS](#)[UPDATES](#)[Help](#)[About](#)[Contact](#)

Enter any location, topic and/or keywords here

SEARCH DATA CENTER

Home > Indicator Selection

ALL TOPICS

REFINE YOUR SEARCH

LOCATIONS

Maryland

Show indicators with data:

- For Maryland
- By County
- By Congressional District
- By City

TOPICS

Choose one topic. Then select subtopics.

- See All Topics
- Demographics
- Economic Well-Being
- Education
- Family & Community
- Health
- Safety & Risky Behaviors
- Other/Data Book Rankings

Print Email Share

MARYLAND INDICATORS

Data Provided By:

- ▲ National KIDS COUNT
- Advocates for Children and Youth

Select a specific indicator below or build a custom indicator report for your community.

DEMOGRAPHICS INDICATORS

Basic Demographics

- Total population by county
- Child population by gender

Children in Immigrant Families

- Children in immigrant families
- Child population by nativity
- Children in immigrant families in which resident parents are not U.S. citizens
- Children in immigrant families in which resident parents have been in the country five years or less
- Children in immigrant families who are U.S. citizens
- Children in immigrant families by parent's region of origin

3RD GRADERS BELOW PROFICIENCY - MSA

change indicator

TABLE

MAP

LINE GRAPH

BAR GRAPH

Select Table Type:

Detailed

Sort / Rank

REFINE THIS INDICATOR

MARYLAND LOCATIONS

change

For the State

By City ▶

By County ▼

Uncheck All

- Allegany
- Anne Arundel
- Baltimore City
- Baltimore County
- Calvert
- Caroline
- Carroll
- Cecil

Compare to Maryland

YEARS

Choose up to 5 years:

- 2012
- 2011

TOOLS: [Raw Data](#) | [Definition & Sources](#)

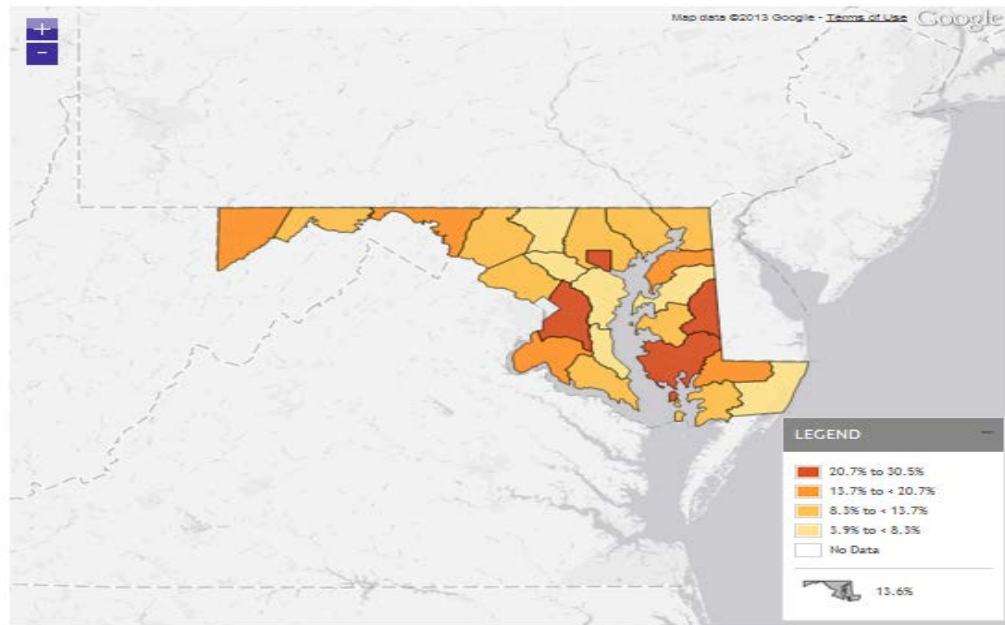
3rd Graders Below Proficiency - MSA

Data Provided by: [Advocates for Children and Youth](#)

Location	Data Type	2008	2009	2010	2011	2012
Maryland	Percent	17.2%	15.4%	15.0%	14.3%	13.6%
Allegany	Percent	19.0%	16.2%	12.9%	12.7%	11.1%
Anne Arundel	Percent	11.6%	10.6%	10.0%	9.0%	8.3%
Baltimore City	Percent	27.4%	22.7%	23.5%	28.6%	30.5%
Baltimore County	Percent	15.9%	13.4%	13.0%	11.6%	10.2%
Calvert	Percent	9.9%	7.7%	9.5%	7.9%	6.6%
Caroline	Percent	13.6%	15.8%	11.5%	16.6%	24.3%
Carroll	Percent	8.3%	9.5%	9.3%	10.0%	8.0%
Cecil	Percent	16.7%	18.6%	16.3%	13.9%	11.9%
Charles	Percent	19.5%	19.0%	16.9%	18.0%	16.3%
Dorchester	Percent	27.7%	30.6%	31.8%	24.7%	23.9%
Frederick	Percent	12.5%	10.7%	10.3%	9.1%	8.3%
Garrett	Percent	15.2%	17.6%	15.2%	13.5%	15.4%
Harford	Percent	12.1%	12.8%	13.6%	24.5%	10.8%

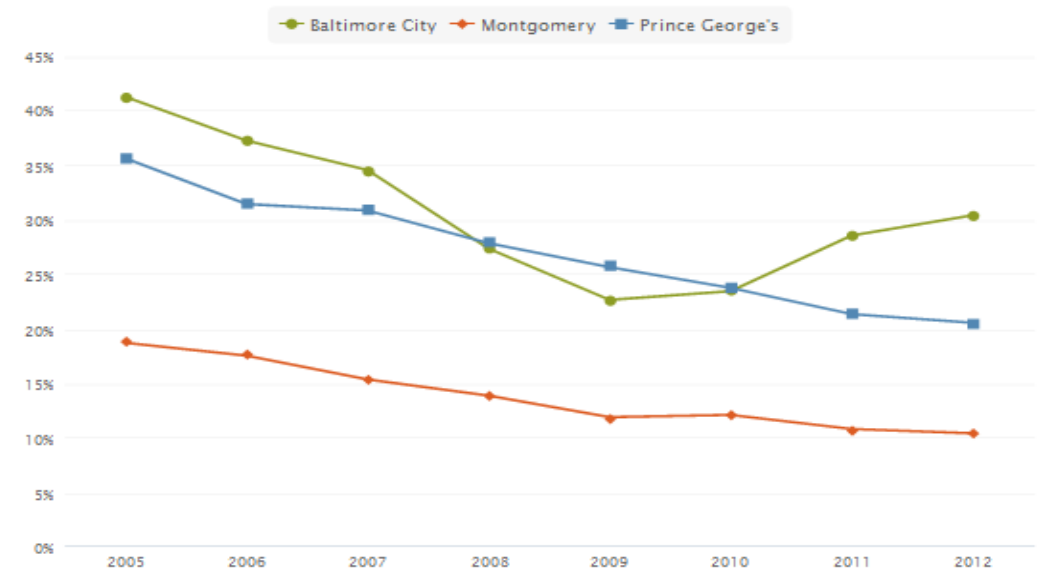
3rd Graders Below Proficiency - MSA

Data Provided by: Advocates for Children and Youth



3rd Graders Below Proficiency - MSA

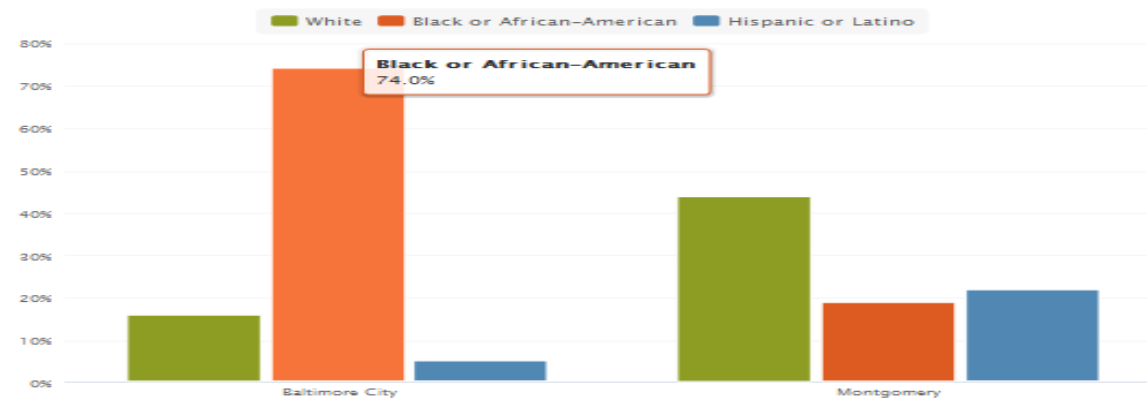
Data Provided by: Advocates for Children and Youth



Child Population By Race

Race/Ethnicity: 3 selected | Data Type: Percent

Data Provided by: Advocates for Children and Youth



SELECTED KIDS COUNT INDICATORS FOR BALTIMORE, MARYLAND

 Compare to Maryland

 Jump to Specific Indicator: Children in low-income households with a high housing cost burden
[New Report >](#)

Children In Low-income Households With A High Housing Cost Burden (Number & Percent)

Location	Data Type	2008	2009	2010	2011	2012
Maryland	Number	257,000	279,000	297,000	299,000	301,000
	Percent	76%	77%	75%	75%	74%
Baltimore	Number	S	S	S	56,000	51,000
	Percent	S	S	S	70%	63%

 Modify Tables: [Most Recent Year](#)

 All Available Years: [Raw Data \(Baltimore\)](#)
[Explore Data >](#)

DEFINITIONS & SOURCES

EXPAND

Children Below 150 Percent Poverty (Number & Percent)

Location	Data Type	2008	2009	2010	2011	2012
Maryland	Number	231,000	251,000	276,000	282,000	293,000
	Percent	17%	19%	21%	21%	22%
Baltimore	Number	60,000	61,000	65,000	65,000	67,000
	Percent	40%	44%	50%	50%	51%

 Modify Tables: [Most Recent Year](#)

 All Available Years: [Raw Data \(Baltimore\)](#)
[Explore Data >](#)

DEFINITIONS & SOURCES

EXPAND



We are every child's ally.

8 Market Place, Suite 500
Baltimore, Maryland 21202
410-547-9200

www.acy.org

Al Passarella
Research Director
apassarella@acy.org



Neha Trivedi
Health Policy Director
ntrivedi@acy.org

